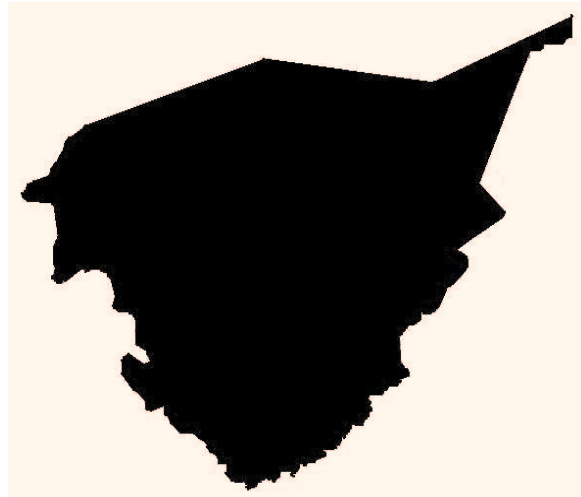




Bullitt County Health Department

HEALTH ASSESSMENT REPORT

2010



HEALTH ASSESSMENT REPORT

2010

Bullitt County Health Department

Director:

Swannie Jett, DrPHc, MS

Produced by:

Regional Epidemiologist

Vinay Chiguluri

Contributing Staff:

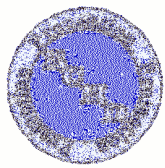
Andrea Renfrow, BSN

Cynthia Brown, MS

Mary A. Blanton, BS

Ida Butterworth, MS

Joe Haner, BS



Bullitt County Health Department

Swannie Jett, DrPHc, MSc
Public Health Director

To the Readers of this Report:

This is the first annual Health Assessment Report of Bullitt County, Kentucky. One of Bullitt County Health Department's core functions is to provide a health status assessment of the community. This report's intent is to educate and provide awareness of the key health indicators that reflect our health status and to provide data for us to make key decisions in order to improve the overall health of our citizens.

Included in this report is a brief description of the data and areas for improvement. Currently, we are ranked 12th in the State according to our health indicators. There's an opportunity for us to improve this ranking. The first step includes community partners collaborating with the Bullitt County Health Department to improve the public health system by providing greater access to care, bike lanes, access to transportation, and greater land for recreational facilities.

We are excited about our opportunities to collaborate and initiate further discussions to improve Bullitt County. We can achieve greater heights by working together for a common goal.....a safe and healthier community!

If you have any suggestions or comments, please contact our Administration Office at (502) 955-7837. Thank you for allowing us to serve.

Sincerely,

Swannie Jett

Swannie Jett, DrPHc, MS
Public Health Director